



Temporary Products

Temporary Foundation



Applications:

Traffic Signals, Street Lighting, Signage

The NAL Temporary Foundation Systems are a range of highly stable pre cast foundations which secure all types and sizes of illuminated and non-illuminated posts that are required on a temporary basis. All posts are secured in position with the unique NAL retention socket system which is positioned centrally in the foundation. This ensures that posts cannot be removed or rotated by unauthorised personal. Foundations are designed to EN40 and are square or rectangular in design to ensure maximum stability. Certified lifting points ensure they can be safely moved around site.

All electric cables enter and exit at the bottom of the bases when used with illuminated posts and the retention socket also allow posts to be easily unlocked and removed when no longer required. This enables the foundations to be easily stacked and stored. A variety of post inserts allow each foundation to be used with a wide range of post diameters, giving them multi use. NAL provide foundations for all standard post sizes in steel and aluminium. Non-standard sizes and shapes can also be manufactured on request.

Advantages

- ◇ Designed to EN40
- ◇ Ready for immediate use
- ◇ Surface mounted
- ◇ Stable footprint
- ◇ Certified lifting points for safe movement
- ◇ Fully reusable / easily stored
- ◇ Extensive range of sizes available
- ◇ Reducing inserts allow multi use



A CRH COMPANY

Temporary Foundation Specification

Temporary foundations must be designed to EN40 or BD94/07 to suit the post and furniture being installed. Calculations must be provided by the manufacturing organisation.

All foundations to be of C40/C50 compressive strength.

Temporary foundations must be supplied with removable lifting points which conform and are certified to the requirements of the lifting equipment regulations 1998, S12307 and the supply of machinery regulations.

Temporary foundations must clearly display their Safe Working Load (SWL).

Temporary foundations must have a centrally located Retention Socket to secure the post being installed into it.

Retention Sockets must be constructed from cast steel to GS240 or ductile iron to BS2789 500-7.

Posts must be positively secured into the Retention Sockets and be able to withstand a turning moment of 3.4kNm through a load of 230kg @ 1.5metres from the centre of the post without any rotation.

Retention Sockets must be supplied with pedestrian plugs to ensure the post aperture is kept free from debris when not in use.

Temporary foundations for illuminated posts must be supplied with bottom cable entry which enables the cables to feed through the base of the post.

All operating components of the socket must be serviceable on site without removing the socket.

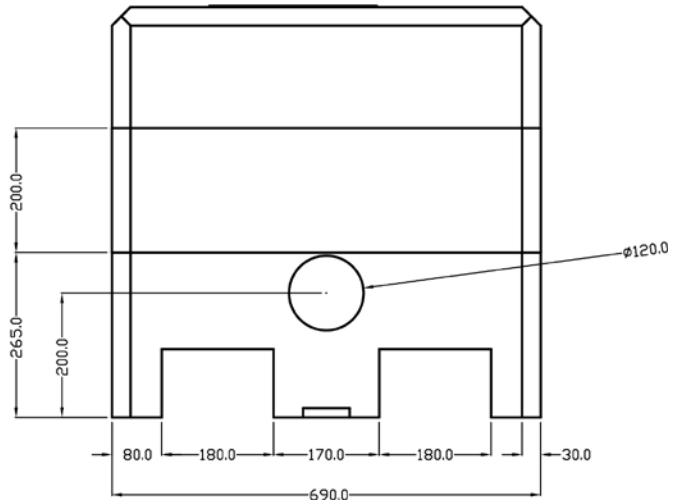
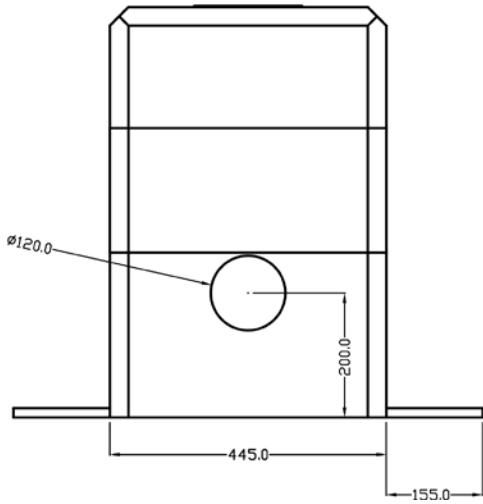
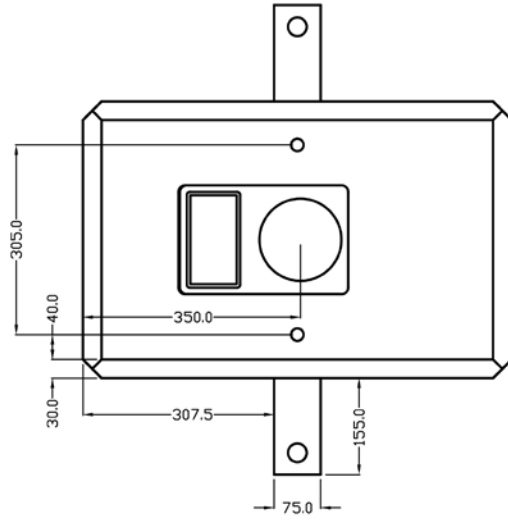
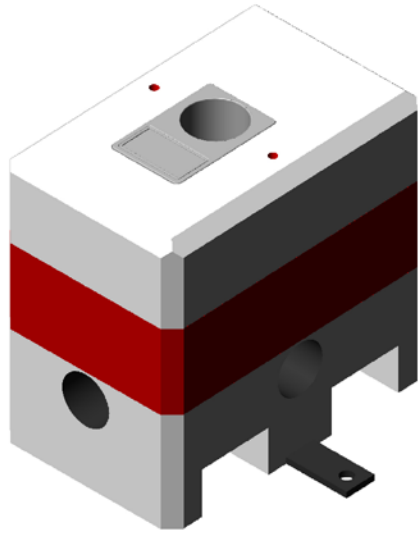
All Retention Sockets must be provided to the above specification by NAL Ltd or any equally approved manufacturer.



A CRH COMPANY

T: **+44 (0)1905 427100**
F: **+44 (0)1905 427030**
E: **sales@nal.ltd.uk**
W: **www.nal.ltd.uk**

NAL Ltd
Weir Lane
Worcester
WR2 4AY



A CRH COMPANY

T: +44 (0)1905 427100
 F: +44 (0)1905 427030
 E: sales@nal.ltd.uk
 W: www.nal.ltd.uk

NAL Ltd
 Weir Lane
 Worcester
 WR2 4AY