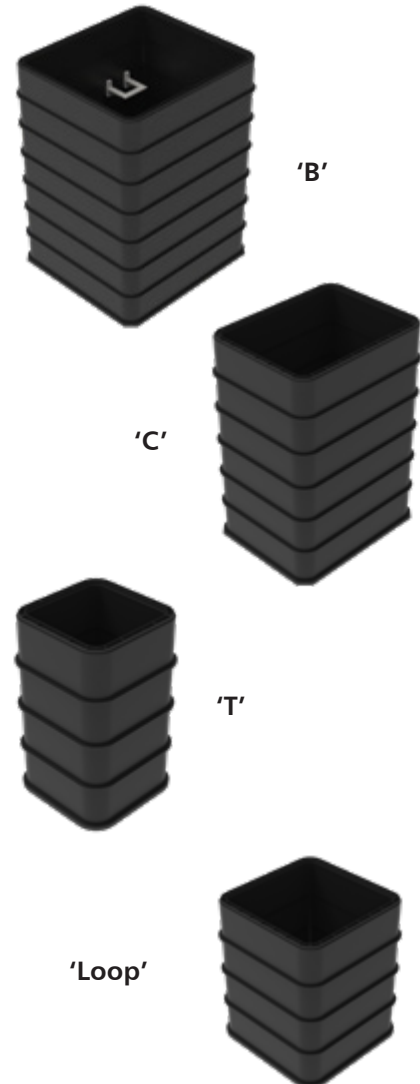
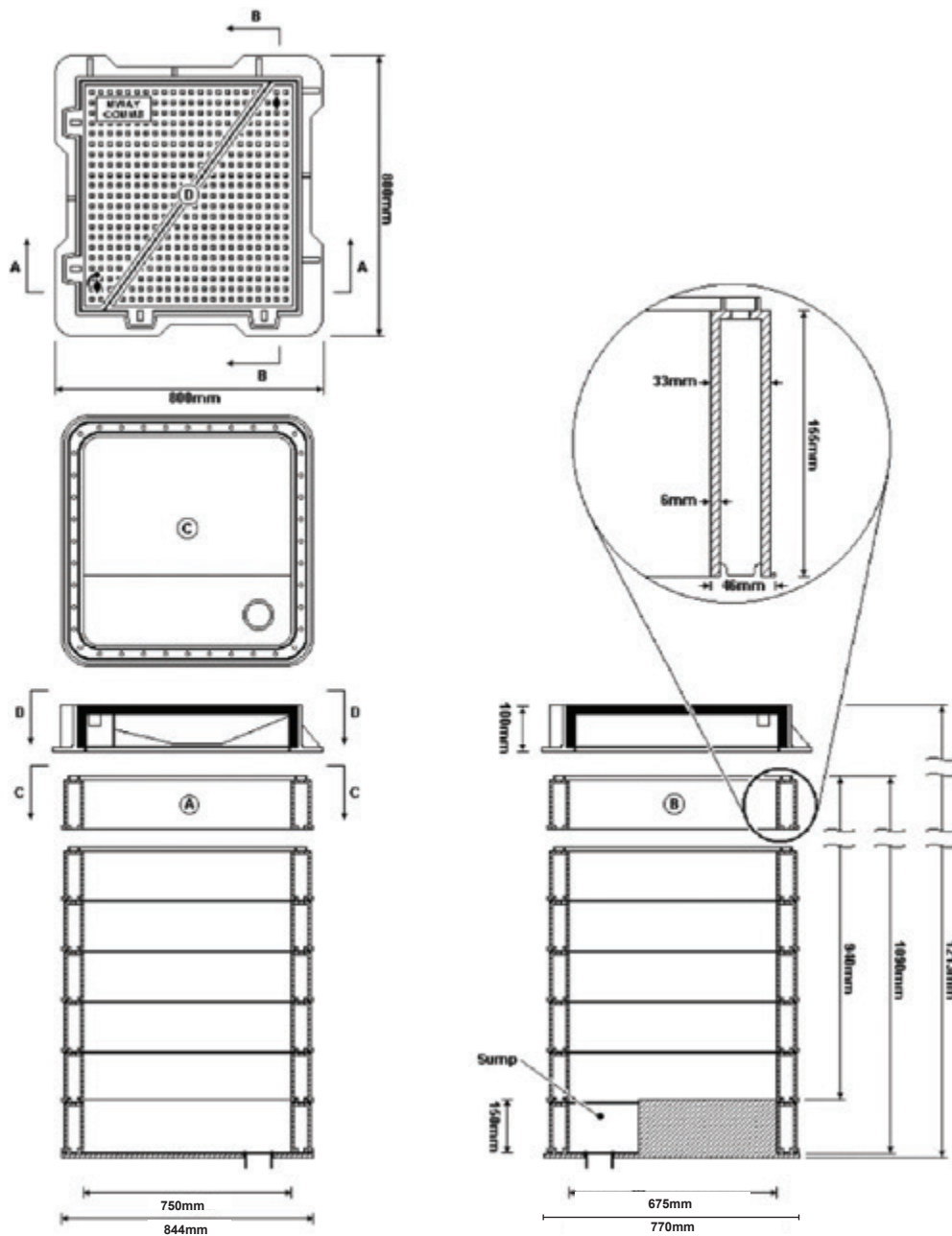


The NAL STAKKAbox™ Modula system is a range of thermoplastic, preformed twin wall, modular access chambers capable of withstanding vertical loads in excess of 40 tonnes without the requirement for any structural support. The chambers are easily adaptable on site to overcome services without any loss of strength, available in B, C, T and Loop chamber sizes for Motorway Communications installations.

Advantages

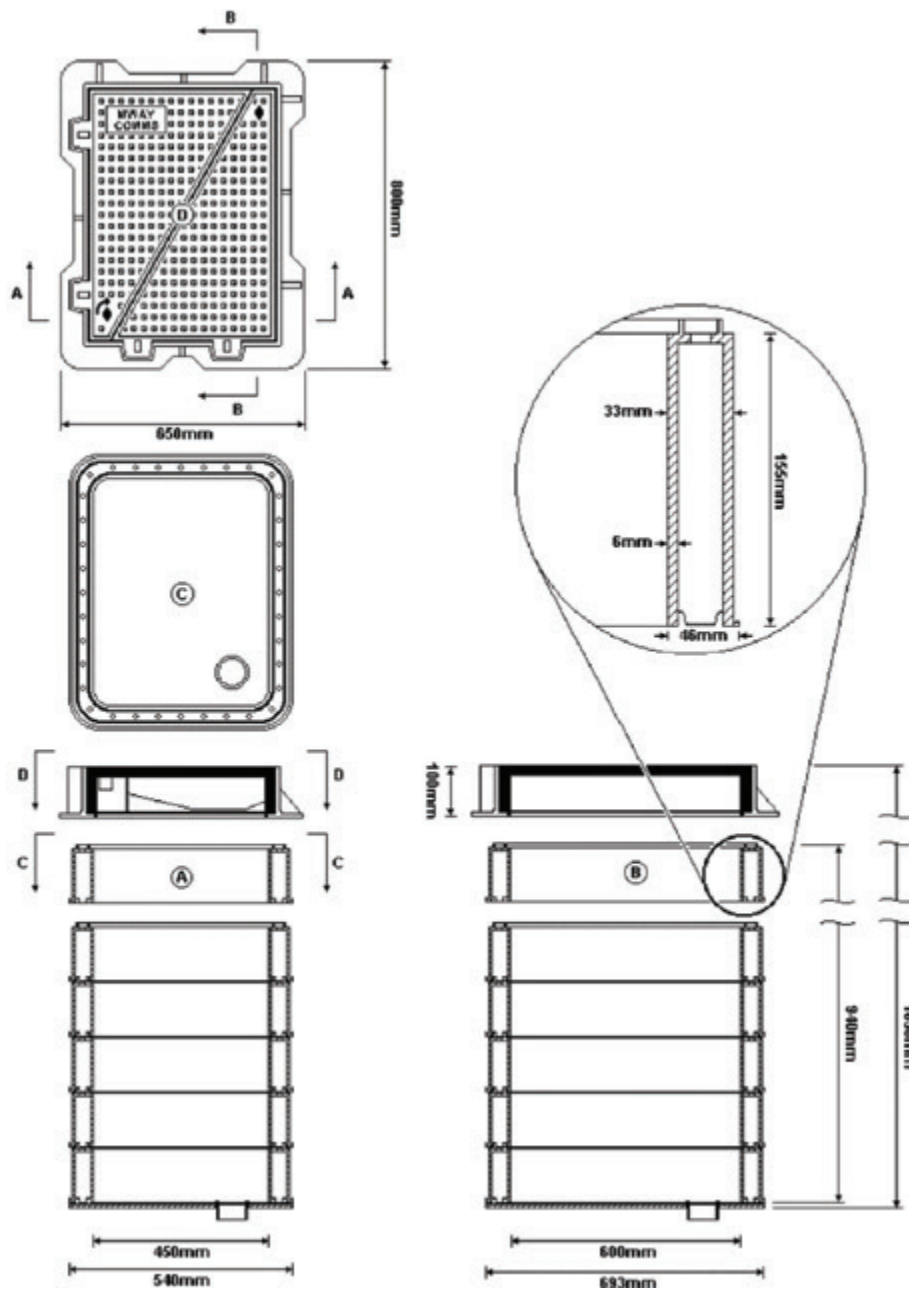
- ◆ Stackable lightweight sections allow rapid installation
- ◆ Twin wall design ensures no requirement for concrete surround
- ◆ Duct entries can be pre-drilled or drilled on site
- ◆ Lightweight sections for manual handling
- ◆ Easily adapted on site without loss of strength
- ◆ Life expectancy in excess of 40 years
- ◆ Fully recyclable material
- ◆ Ability to set cover/frame and reinstate immediately after installation
- ◆ Can be used with B125, C250 and D400 covers





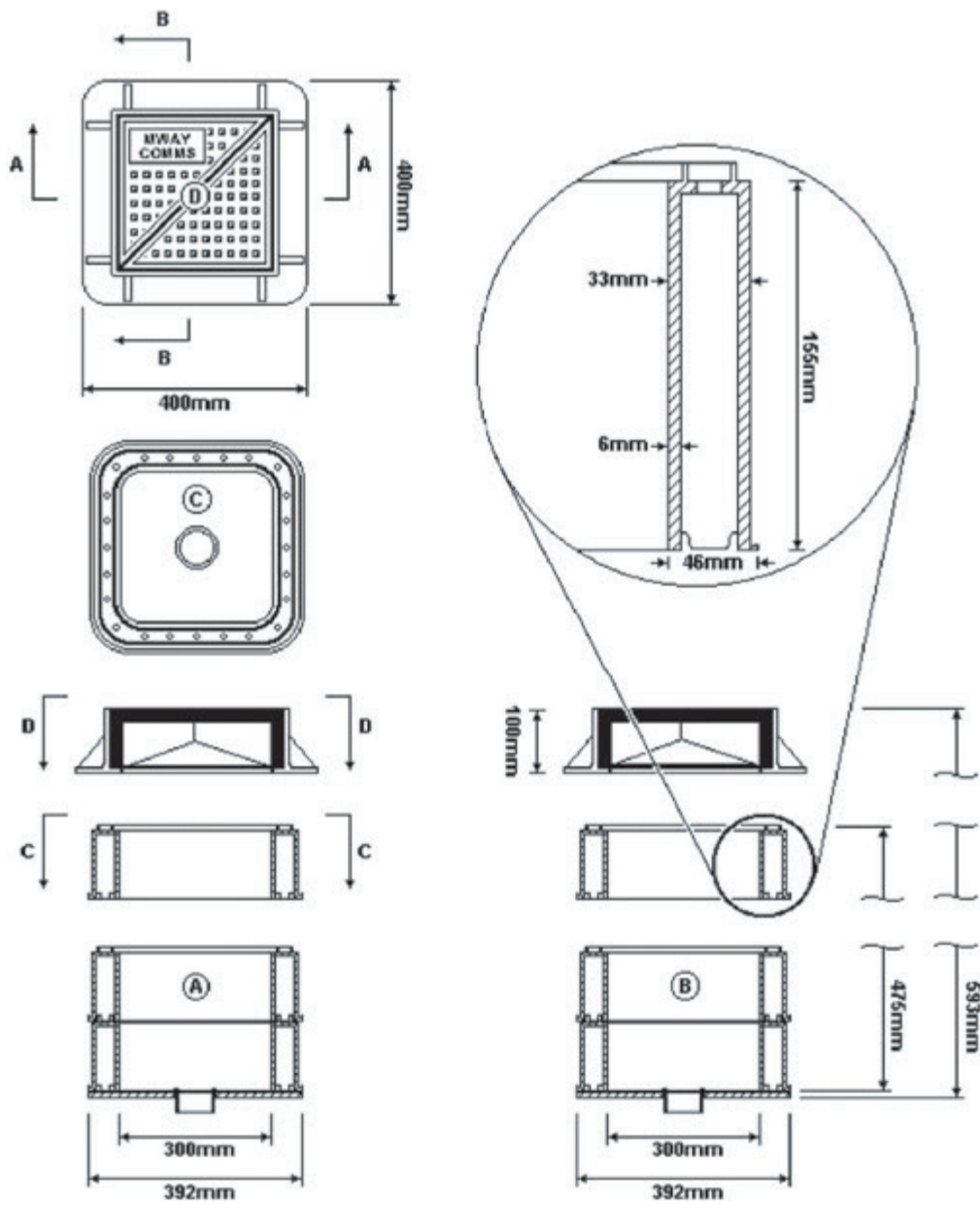
'B' Chamber Set

Item	Details	Number
Frame and Cover	EN124 D400 Ductile Iron Hinged Covers Badged 'Motorway Communications' (as shown in drawing)	1
Chamber	STAKKAbOX™ Modula 750mm Long x 675mm Wide x (nominal) 900mm Deep (made from 155mm deep sections)	1
Base	Base with Sump To MXC Detail 150mm Internal Depth 310mm External Depth x 225mm Wide x 600mm Long	1
Cable Management	None	0
Access	None	0
Duct Entry	Made on site	-



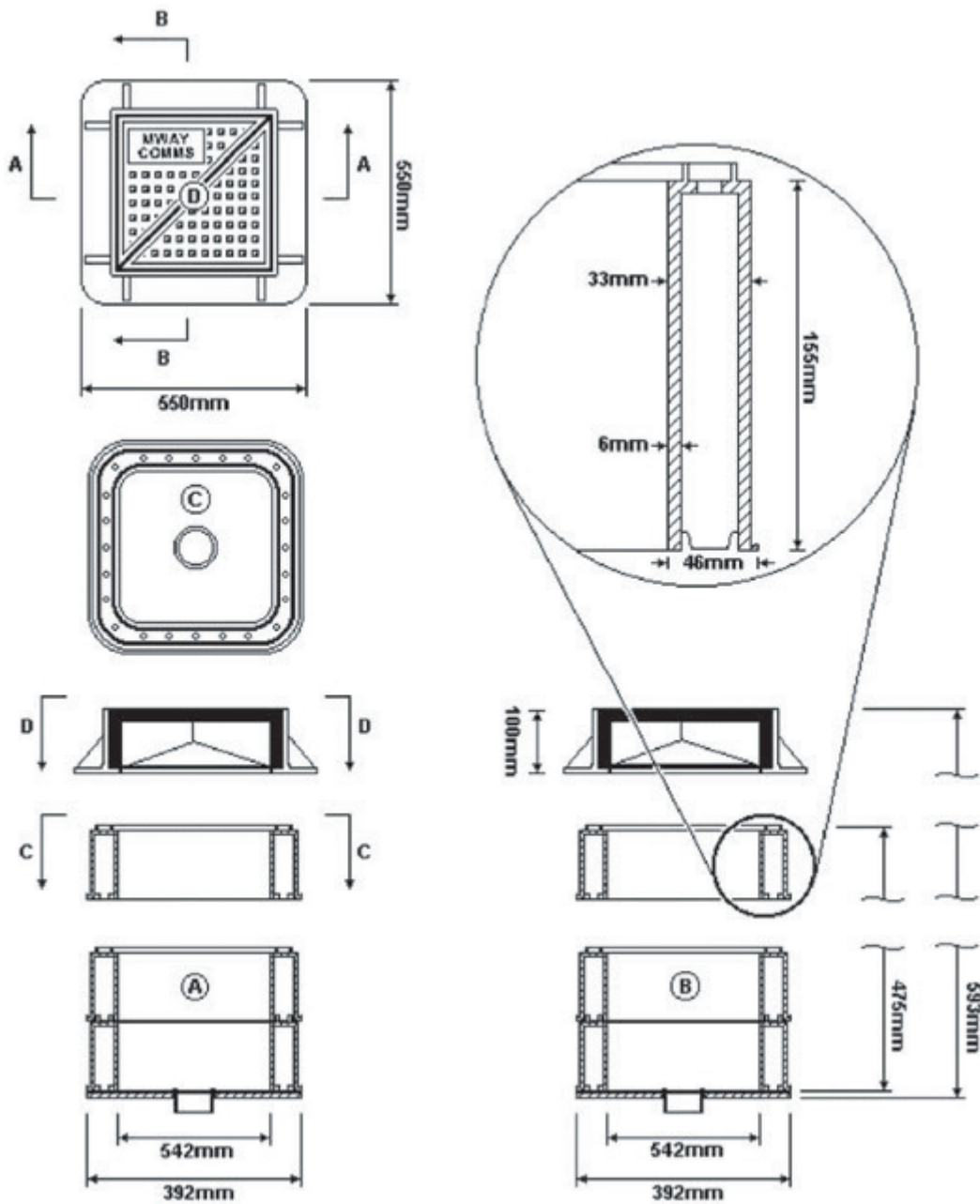
'C' Chamber Set

Item	Details	Number
Frame and Cover	EN124 D400 Ductile Iron Hinged Covers Badged 'Motorway Communications' (as shown in drawing)	1
Chamber	STAKKAbOX™ Modula 600mm Long x 450mm Wide x (nominal) 900mm Deep (made from 150mm deep sections)	1
Base	Flat Base Section	1
Cable Management	None	0
Access	None	0
Duct Entry	Made on site	-



'T' Chamber Set

Item	Details	Number
Frame and Cover	EN124 D400 Ductile Iron Hinged Covers Badged 'Motorway Communications' (as shown in drawing)	1
Chamber	STAKKAbOX™ Modula 300mm Long x 300mm Wide x (nominal) 475mm Deep (made from 155mm deep sections)	1
Base	Flat Base Section	1
Cable Management	None	0
Access	None	0
Duct Entry	Made on site	-



'Loop' Chamber Set

Item	Details	Number
Frame and Cover	EN124 D400 Ductile Iron Hinged Covers Badged 'Motorway Communications' (as shown in drawing)	1
Chamber	STAKKAbOX™ Modula 450mm Long x 450mm Wide x (nominal) 475mm Deep (made from 150mm deep sections)	1
Base	Flat Base Section	1
Cable Management	None	0
Access	None	0
Duct Entry	Made on site	-