

Installation Guide

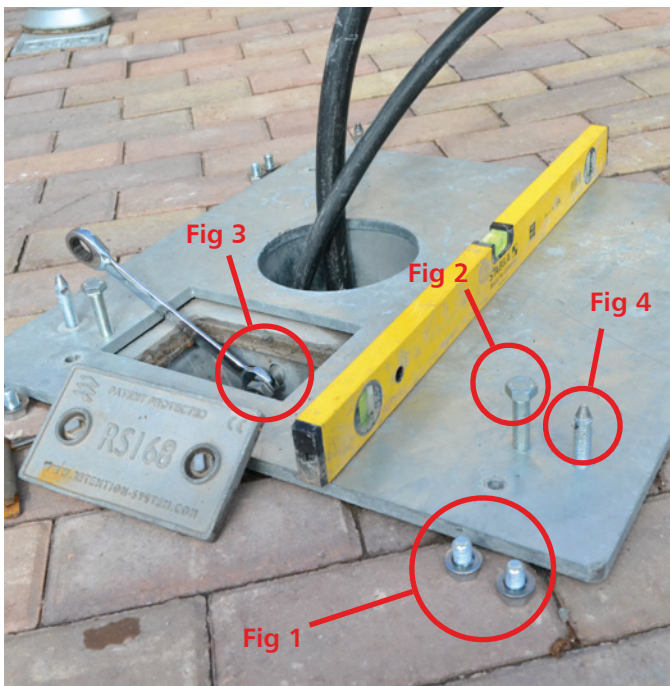
Adapter Plate For QC45 EV Charger



Step 1 - Retention Sockets are pre-installed for the EV Rapid charge units and protective bollards. This allows civils and ducting works to be completed before installation of the EV units and enables the site to remain open to the public.



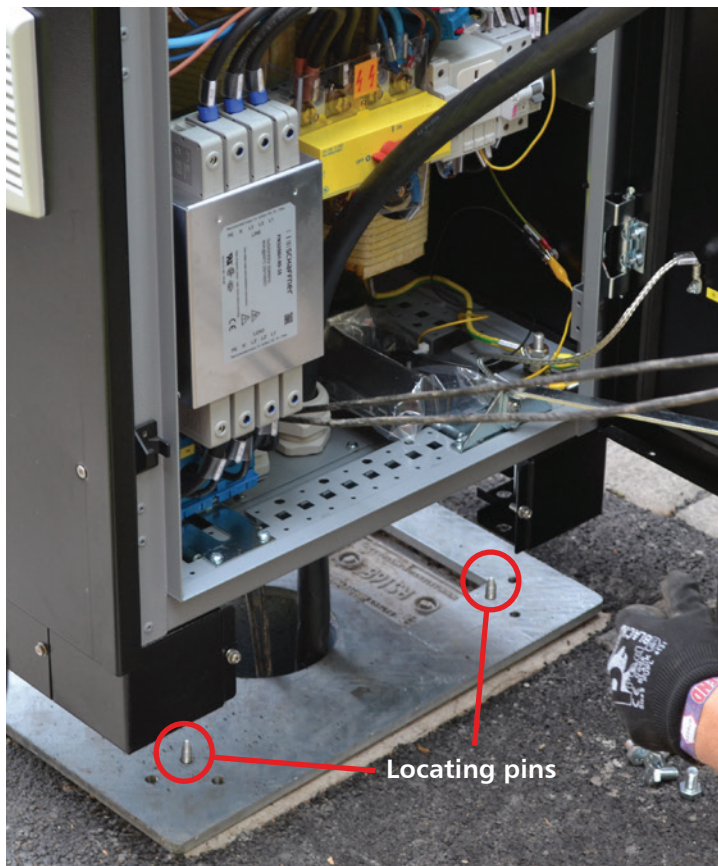
Step 2 - To install the EV Rapid charge unit, firstly remove the Retention Socket side chamber lid and pedestrian plug. Insert the EV charger Adapter Plate into the Retention Socket (Adapter Plates are available for all EV charge units). Pull all cables through the pre-installed duct and out of the Retention Socket leaving tails long enough to terminate within the unit.



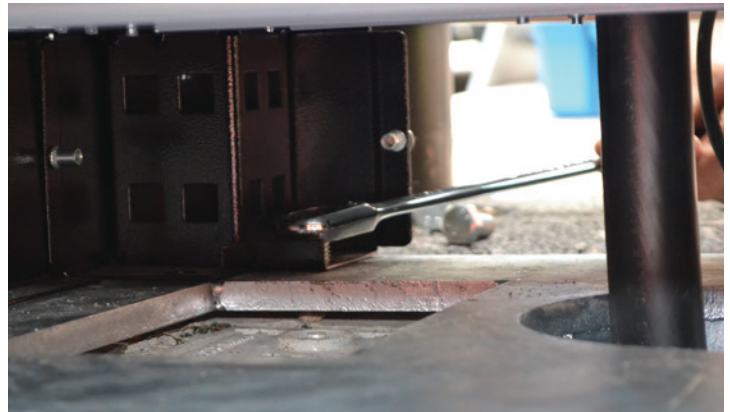
Step 3 - Remove M12 set screws (**figure 1**) and put to one side. Align and level the Adapter Plate to the required orientation using leveling bolts (**figure 2**) ensuring the Retention Socket side chamber is not impeded and secure in place by tightening the 2nr x 24mm set screws (**figure 3**). Insert locating pins (**figure 4**).



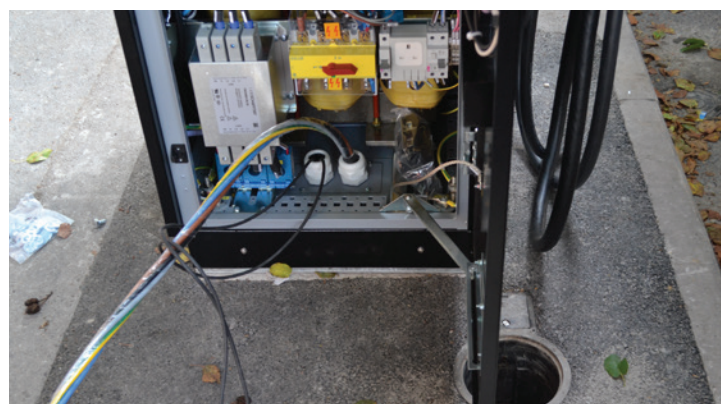
Step 4 - Lift the EV charge unit into place ensuring all cables tails are fed through the correct base glands.



Step 5 - Lower the EV charge unit onto the Adapter Plate, using the locating pins to align. Ensure cable slack is being pulled through.



Step 6 - Remove the locating pins and replace with M12 set screws to secure EV unit down to the Adapter Plate.



Step 7 - The EV charge unit can now be connected to all the installed cable tails.



Step 8 - NAL X-LAST Standard protective bollards are installed into Retention Sockets leaving site operational, safe and futureproofed.

Installation Guide

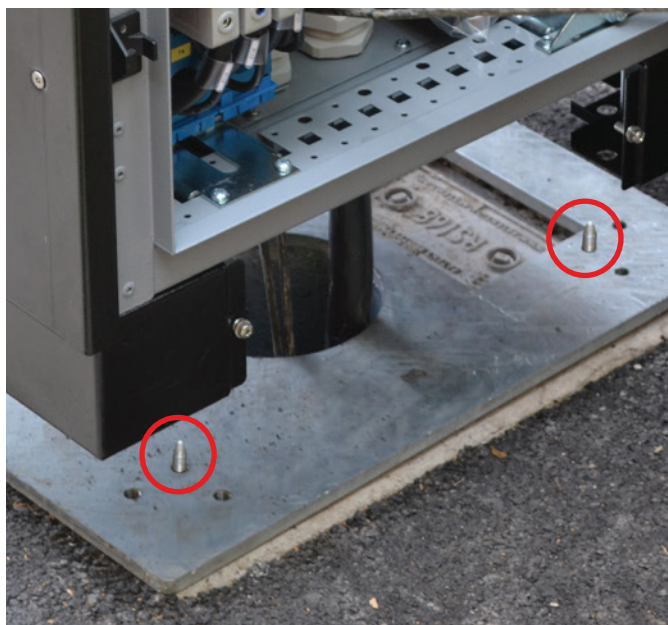
Accessories For Rapid Charge Adapter Plate



Pressure Pads - for installations in tarmac areas.



Locating Pins - for aligning the EV unit to the Adapter Plate.



Lifting Loops - for lowering plate onto Retention Socket.

