



EasyWynd® Components

EasyWynd®

U-bolt

Pole pad

Bolts and washers

Crank handle



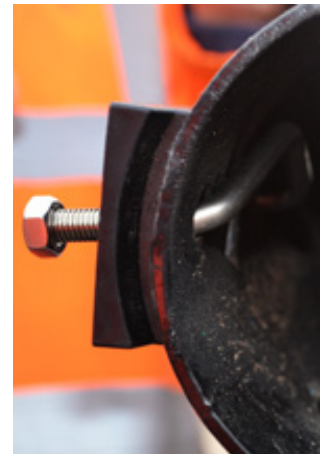
Step 1

Remove grommets from the traffic signal pole.



Step 2

Insert U-bolt and place pole pad on pole.



Step 3

Tighten two nuts on the U-bolt, securing the pole pad.



Step 4

Position EasyWynd® over the protruding U-bolt.



Step 5

Place nuts and washers over the U-bolt and tighten with a socket set.
NB - Pivot the EasyWynd® half way for easier access to the bolts.



Step 6

Slot the extension arm into the EasyWynd® and insert the bolt through the fixing point.

Add the washer and nut to the opposite end of the bolt tighten with a socket.



Step 7

Once the traffic signal pole is installed, connect the crank handle to the EasyWynd® and rotate to erect the extension arm.

Installation complete.