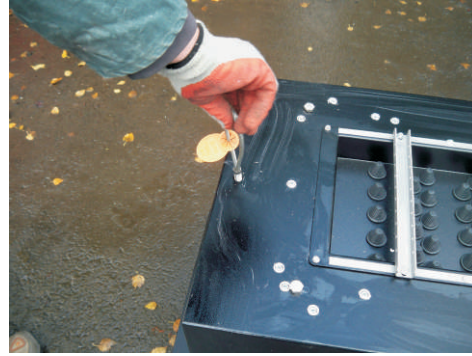


NAL Temporary Controller Base



2 Lifting eyes installed



Unscrew lifting eyes and remove



Drill 4 fixing points



Bolt down to floor



Undo locks on front access door



Remove front access door



Extra ballast can be added if required



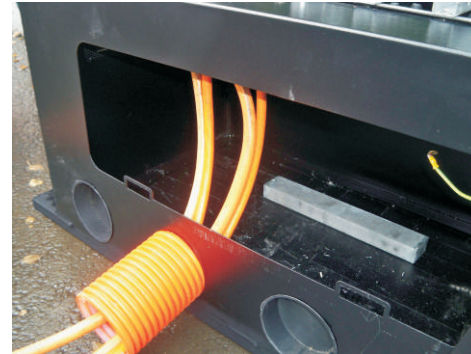
Remove required duct entry caps



Positively connect duct

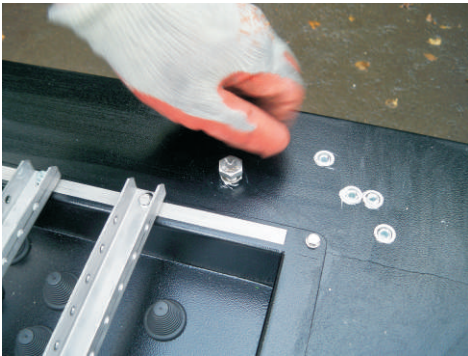


Cables can now be pulled

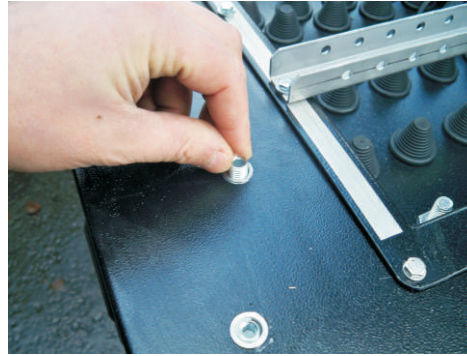


Thread lifting eyes from underneath to plug holes

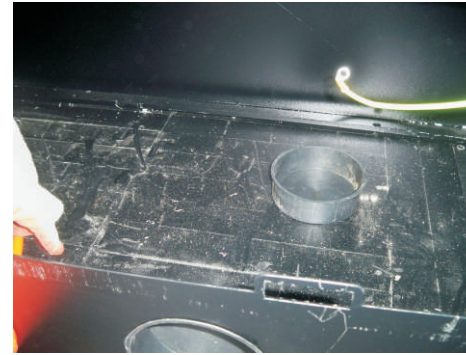
Temporary Foundation with Cabinet



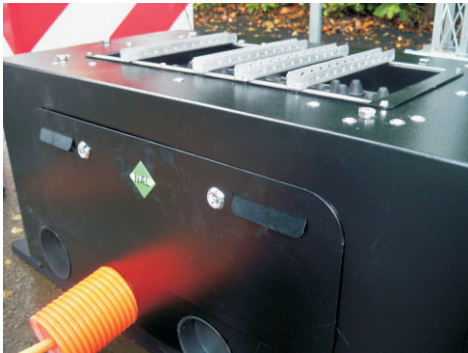
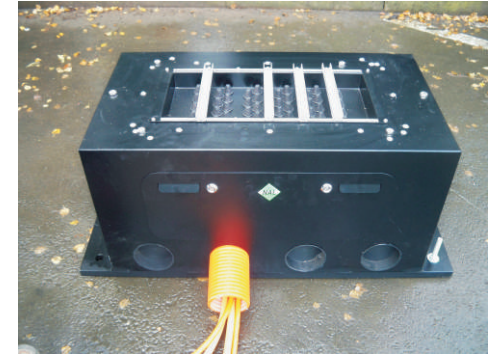
Remove 4 cabinet fixing bolts



Unscrew grommets from positions that are not required



All accessories can be stored in plinth



Position cabinet and bolt down

