

# Chamber and Duct Systems

## MCX STAKKAbox™ Ultima A Chamber



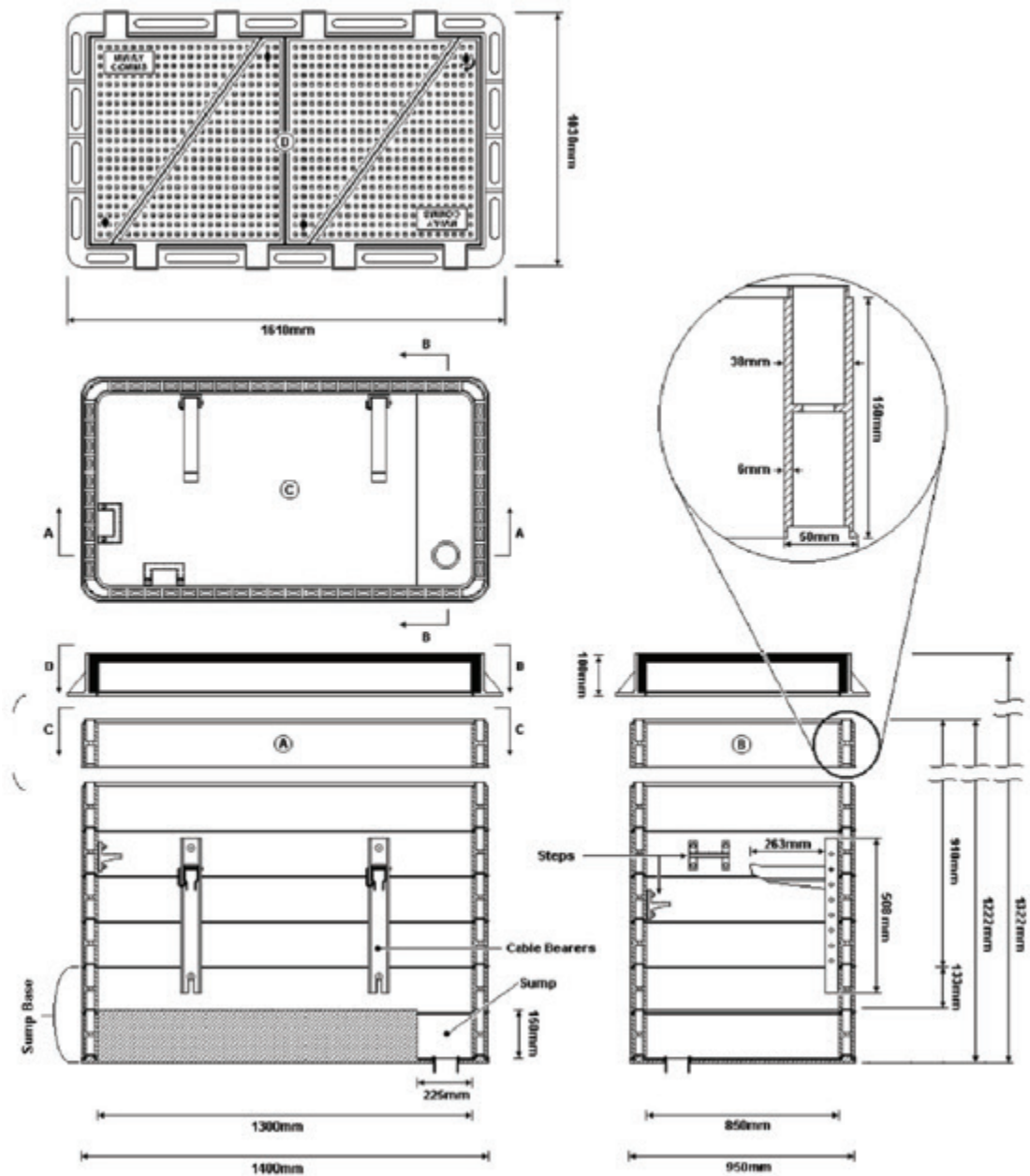
The NAL STAKKAbox™ ULTIMA offers a flexible access chamber system with no compromise on strength. Due to the design and the material used (Glass Reinforced Polyester Resin). This chamber can be used where a side-wall exceeds 1000mm and loading is a concern, making it ideal for A type Motorway Communication chamber installations.

GRP is an ideal material for access chamber products due to its high mechanical strength, fire retardant, chemical and lightweight properties and is unaffected by side-wall creep. Creep is the tendency of a solid material to permanently deform under continuous or long term or mechanical stresses, such as side walls in excess of 1000mm.

### Advantages

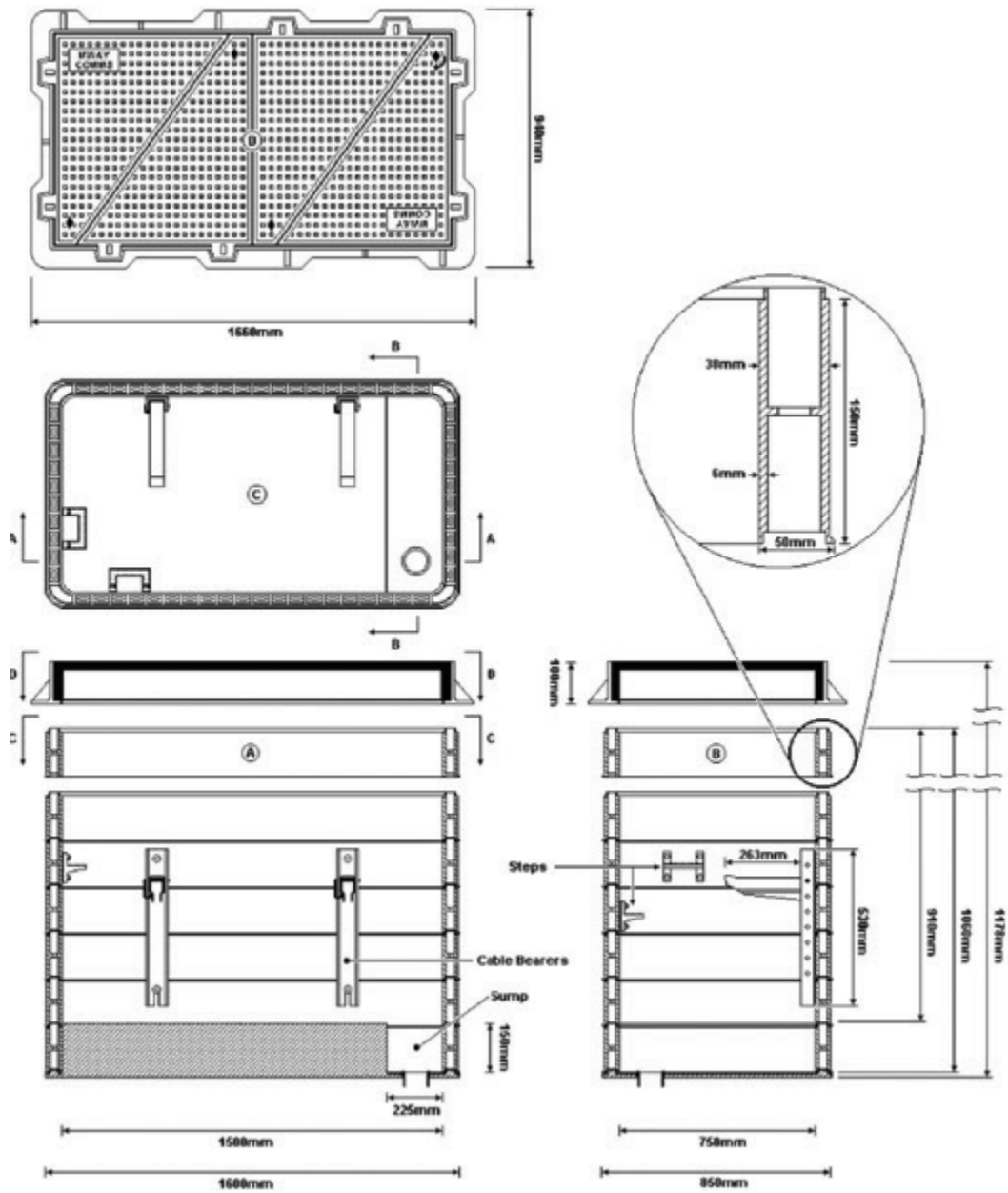
- ◆ Rapid installation 60 tonne vertical loading
- ◆ Thermoset GRP twin wall design offers superior side wall strength
- ◆ No requirement for concrete surround
- ◆ Unaffected by sidewall creep
- ◆ Easily adaptable on site without loss of strength
- ◆ Life expectancy in excess of 40 years
- ◆ Fully recyclable
- ◆ Manufactured to MCX 0815 specifications





## 'A' Chamber Set / Scottish 'A' Chamber Set

Item	Details	Number
Frame and Cover	EN124 D400 AX-S Ductile Iron Hinged Covers Badged 'Motorway Communications' (as shown in drawing)	1
Chamber	STAKKAbOX™ Ultima 1310mm Long x 850mm Wide x (nominal) 910mm Deep (made from 150mm deep sections)	1
Base	Base With Sump To MCX Detail 150mm Internal Deep (300mm External Depth) x 225mm Wide x 850mm Long	1
Cable Management	Cable Management Bearer Set, includes: Wall type 508mm Long, Bearer Arm 263mm Long and Locking Pin	2
Access	Step Irons	2
Duct Entry	Made on site	-



## Departure 'A' Chamber Set

Item	Details	Number
Frame and Cover	EN124 D400 Ductile Iron Hinged Covers Badged 'Motorway Communications' (as shown in drawing)	1
Chamber	STAKKAbOX™ Ultima 1500mm Long x 750mm Wide x (nominal) 1050mm Deep (made from 150mm deep sections)	1
Base	Base With Sump 150mm Internal Deep x 225mm Wide x 750mm Long	1
Cable Management	Cable Management Bearer Wall Type, 508mm Long Bearer Arm, 263mm Long	2
Access	Step Irons	2
Duct Entry	Made on site	-



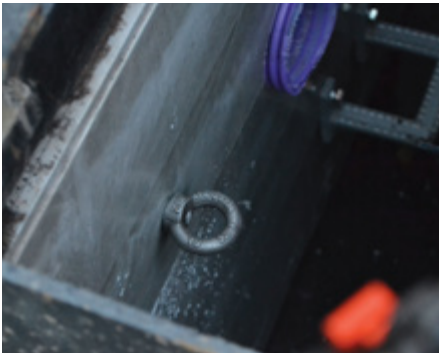
## Steps Irons



## Cable Management



## Eye Bolts



## Bellmouth



## Hole Cutter



### Step Irons

Pre fitted or retro fitted steps are available for chambers over 600mm deep to allow safe personnel entry and exit from chambers.

### Cable Management

A range of de-mountable cable bearers of various lengths assist in the organisation of excess cables within the access chamber.

### Eye Bolt

A range of steel eyebolts and cast in cable anchors offer secure tethering points for cables or drawcord.

### Bellmouth

Provides a smooth finish to the cut end of a duct while preventing the duct from pushing any further into the chamber, which can restrict access. Bellmouths are manufactured in polypropylene and are available in a variety of colours and sizes.

### Hole Cutter

A wide range of various diameter circular saws to suit most duct sizes allow access holes to be drilled in the STAKKAbOX™ access chamber while on site.

