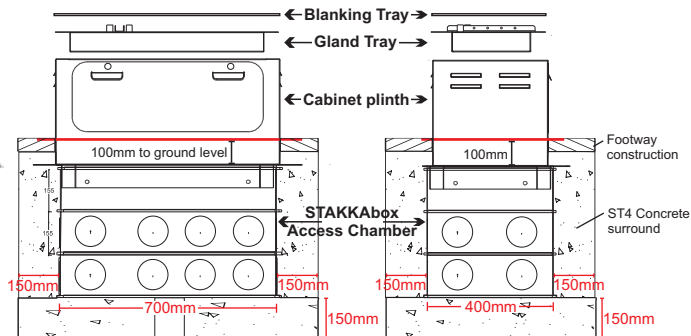


PLEASE DO NOT REMOVE BLANKING TRAY AT CIVILS STAGE



STEP 2

STEP 3

STEP 4

Re-instate footway/verge upto ground level indicator with specified surfacing.



IMPORTANT READ THIS

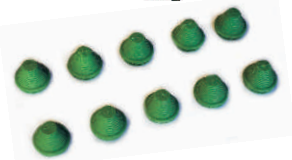
ELECTRICAL INSTALLATION OF CONTROLLER CABINET BASE



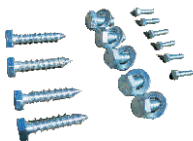
Controller Cabinet plinth



Cable Gland Tray
(various types to suit different
controller cabinet types and cable glands)



Spare Stepped Grommets

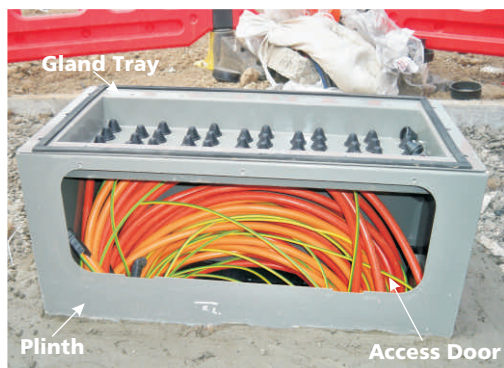


Bolt Pack



Earth Straps

Please refer to part list
and ensure all items are
present prior to starting
installation.



STEP 1

Remove blanking plate and cable gland tray from the top of the plinth and remove front access door.



STEP 2

Pull all cables into the STAKKAbOX access chamber and then through the front access door



NAL CONTROLLER CABINET BASE INSTALLATION

There are 2 options when installing the Controller these are shown below

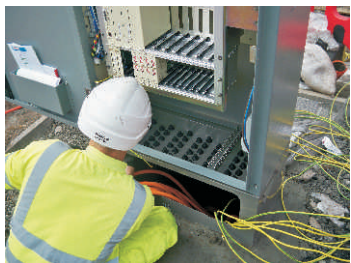
Option A - Installing Controller first



STEP 3A

Lift Controller Cabinet onto plinth and bolt down using bolts provided.

(Cabinets can be lifted safely by using NAL's Cabilift system. Please contact NAL for further information on this product).



STEP 4A

Fix the castellation bars to gland tray above the spaces of the gland tray and not directly over the grommets, with bolts provided.

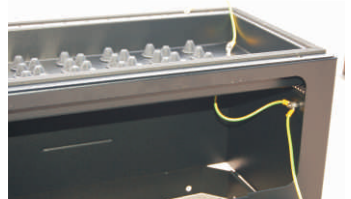
Taking each individual cable - remove stepped grommet gland and cut to relevant core size **(always work from back to front)**.



Feed the cable through hole in the gland tray and slide the appropriate stepped grommet gland down over the cable.

From beneath the gland tray pull cable downwards to positively re-connect the stepped grommet gland into the pre-drilled hole.

The cable can now be glanded and connected to the castellation bar with cable glands.



Ensure earth straps are connected to plinth, front access door and the gland tray.



STEP 5A

Cable controller in normal manner. When all cabling is complete, fit the front access door onto the plinth.

**If in doubt contact
NAL Technical Support
Tel: 01905 427100**

NAL CONTROLLER CABINET BASE INSTALLATION

There are 2 options when installing the Controller these are shown below

Option B - Installing controller after cables are glanded



STEP 3B

Fix the castellation bars to gland tray above the spaces of the gland tray and not directly over the grommets, with bolts provided..

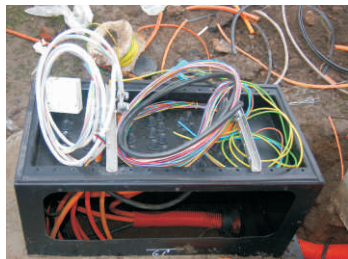
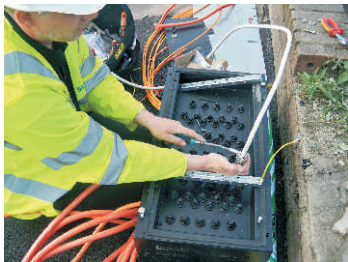
Taking each individual cable - remove stepped grommet gland and cut to relevant core size (always work from back to front).

Feed the cable through hole in the gland tray and slide the appropriate stepped grommet gland down over the cable.

From beneath the gland tray pull cable downwards to positively re-connect the stepped grommet gland into the pre-drilled hole.

The cable can now be glanded and connected to the castellation bar with cable glands.

Ensure earth straps are connected to plinth, front access door and the gland tray.



STEP 4B

Once cabling is complete the cables should be coiled on to top of the gland tray ready for the cabinet to be installed.



OPTIONAL STEP 5B

When the cabling is not complete an optional dummy cabinet can be supplied for. This protects the cables from the weather, vandalism and theft.

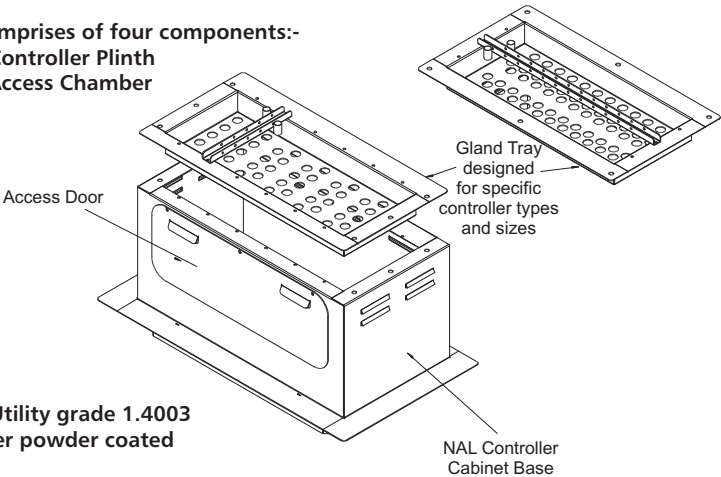


STEP 6B

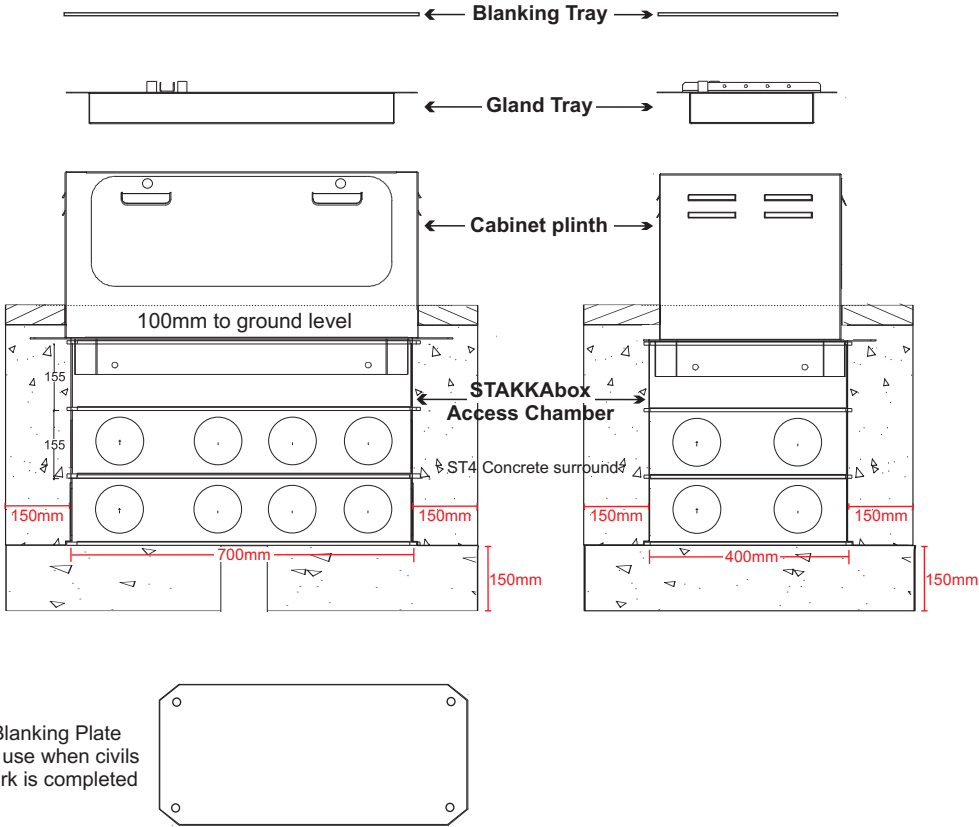
Lift Controller Cabinet onto the plinth and bolt down using bolts provided. The controller can then be cabled in the normal manner. Fit front access door to the plinth.

SPECIFICATION

The NAL Controller Base comprises of four components:-
Blanking Tray, Gland Tray, Controller Plinth
and 40 Tonne STAKKAbOX Access Chamber



Manufactured from 2mm Utility grade 1.4003
Stainless Steel and polyester powder coated



NOT TO SCALE