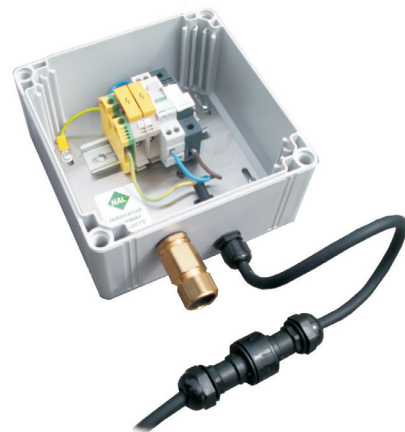




Pillars, Power Supply & Isolation

Mechanical only breakaway systems (MOBS)



Applications:

Street lighting columns, illuminated signs, cctv

The MOBS is a physical termination designed for NE or LE Passively Safe Columns. It provides a minimum solution for isolating the electricity supply to a structure upon impact. Activation occurs by physical disconnection of a tethered IP68 in-line plug and socket.

The system is housed within an IP67 enclosure in a stakkabox access chamber, 3 to 5 metres from the structure. It includes a galvanised steel eyebolt for secure installation.

The MOBS unit, customisable to your specifications, accommodates 6mm-25mm 4-core SWA cables. Each unit includes 5 metres of flex cable, featuring one IP68 in-line plug and socket. These components are tensioned within the passively safe structure just below ground level. Upon impact, if the column detaches, the tensioned plug and socket will separate, ensuring the detached structure remains voltage-free.

Advantages

- ◇ Fully compliant with EN12767:2019
- ◇ IP68 in-line plug and socket system
- ◇ Suitable for use with 6 – 25mm SWA cable
- ◇ IP67 Enclosure with clear front casing

Important

This system does not provide an automatic electrical disconnection, instead relying on tension being applied to a tethered plug and socket, which will pull apart if the column detaches under impact.

Please note:

If column fails to detach, the plug and socket will not disconnect. For zero volt guaranteed disconnection please refer to our above or below ground sis- safety isolation system.



A CRH COMPANY

Mechanical only breakaway system specification

Operating voltages

Up to 400v AC 50/60Hz (3 Phase)

Enclosure dimensions

Height 280mm Depth 130mm Width 280mm

Terminals

16mm DIN through terminals as standard

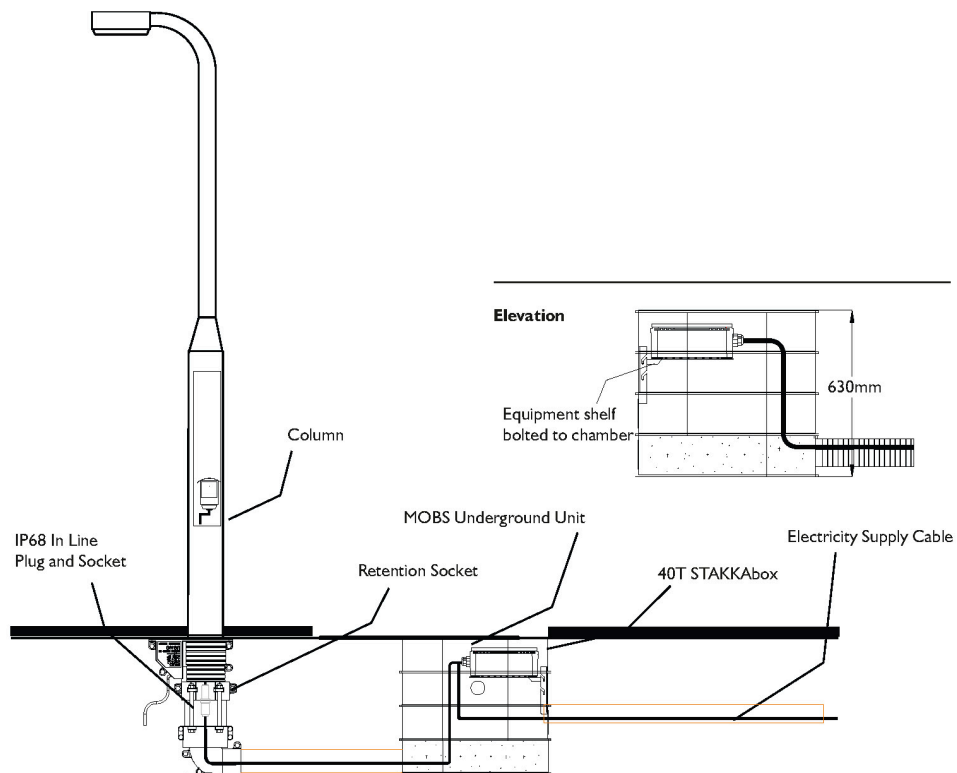
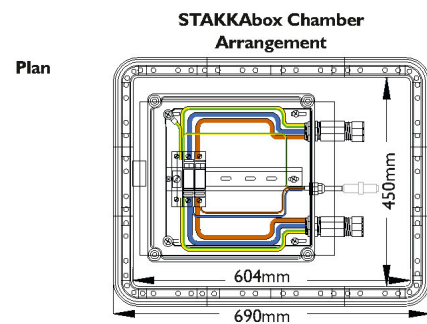
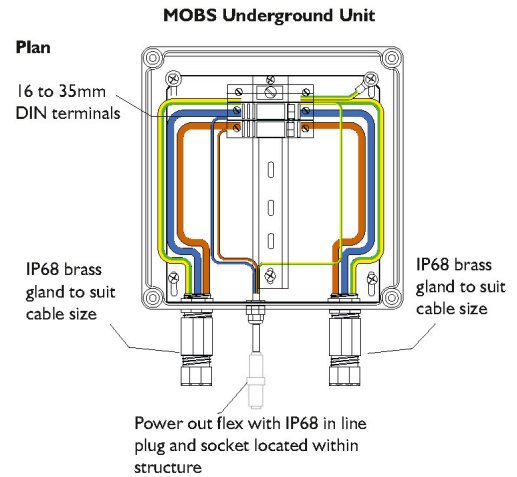
35mm DIN through terminals for larger cables

Multiple linked terminals if requested

Cable glands

Plastic IP68 for the outgoing flex

Brass double seal IP68 glands for incoming SWA cables, 20mm or 25mm



A CRH COMPANY

T: +44 (0)1905 427100
 F: +44 (0)1905 427030
 E: sales@nal.ltd.uk
 W: www.nal.ltd.uk

NAL
 Weir Lane
 Worcester
 WR2 4AY